



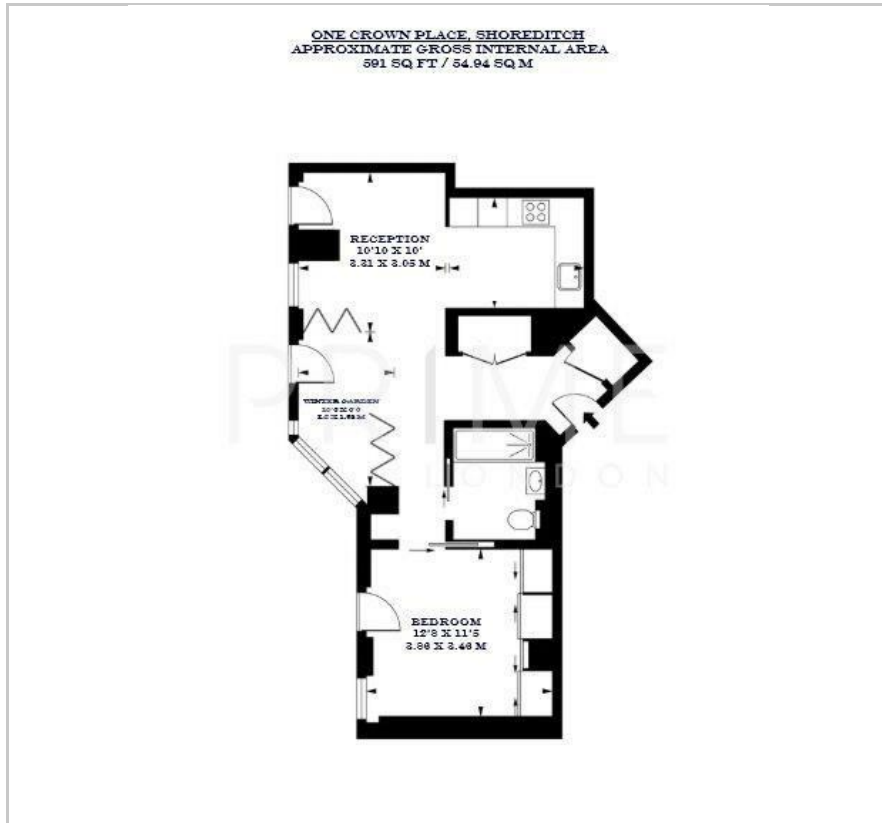
One Crown Place

19 Sun Street, Shoreditch, EC2A 2FJ

£840 Per Week



Floor Plan



Area Map



Energy Efficiency Graph



Viewing

By appointment. Contact us on 0207 052 1075 if you wish to arrange a viewing appointment for this property, or require further information.

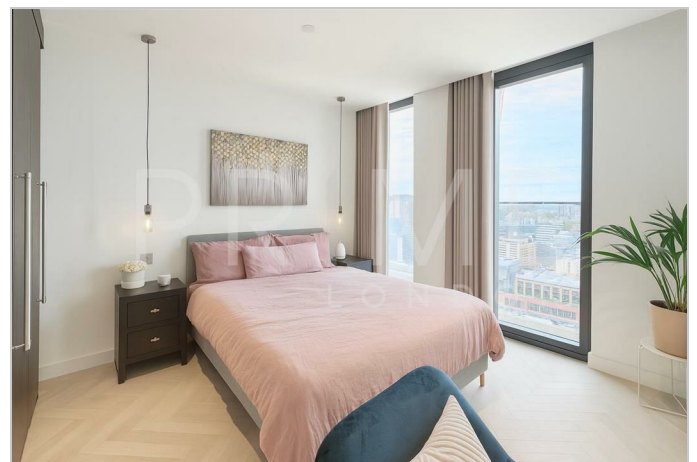
- One bedroom apartment
- 591 sq ft (54.9 sqm)
- Fully furnished to a high standard
- Winter garden standard
- Residents' gym, cinema room,
- 24 hour concierge lounge and terrace

This bright and luxurious one bedroom apartment, located in the popular One Crown Place, is available for lease through Prime London.

Totalling 591 sq ft (54.9 sqm), the property features elegant oak herringbone flooring in the hallway, living area, kitchen, and main bedroom, complemented by underfloor heating throughout and climate-controlled comfort cooling in both the reception areas and bedrooms.

Residents benefit from an impressive suite of amenities, including a 24 hour concierge service, a stylish residents' lounge, private screening room, co-working space, fitness centre, private dining area, treatment room, and a shared outdoor terrace.

One Crown Place enjoys a prime central London location, just a three-minute walk from Liverpool Street Station, with Shoreditch and Old Street also nearby. Excellent transport links connect residents to the West End, Canary Wharf, and all major London airports.



These particulars, whilst believed to be accurate are set out as a general outline only for guidance and do not constitute any part of an offer or contract. Intending purchasers should not rely on them as statements of representation of fact, but must satisfy themselves by inspection or otherwise as to their accuracy. No person in this firm's employment has the authority to make or give any representation or warranty in respect of the property.